

**panel  
claw**<sup>®</sup>

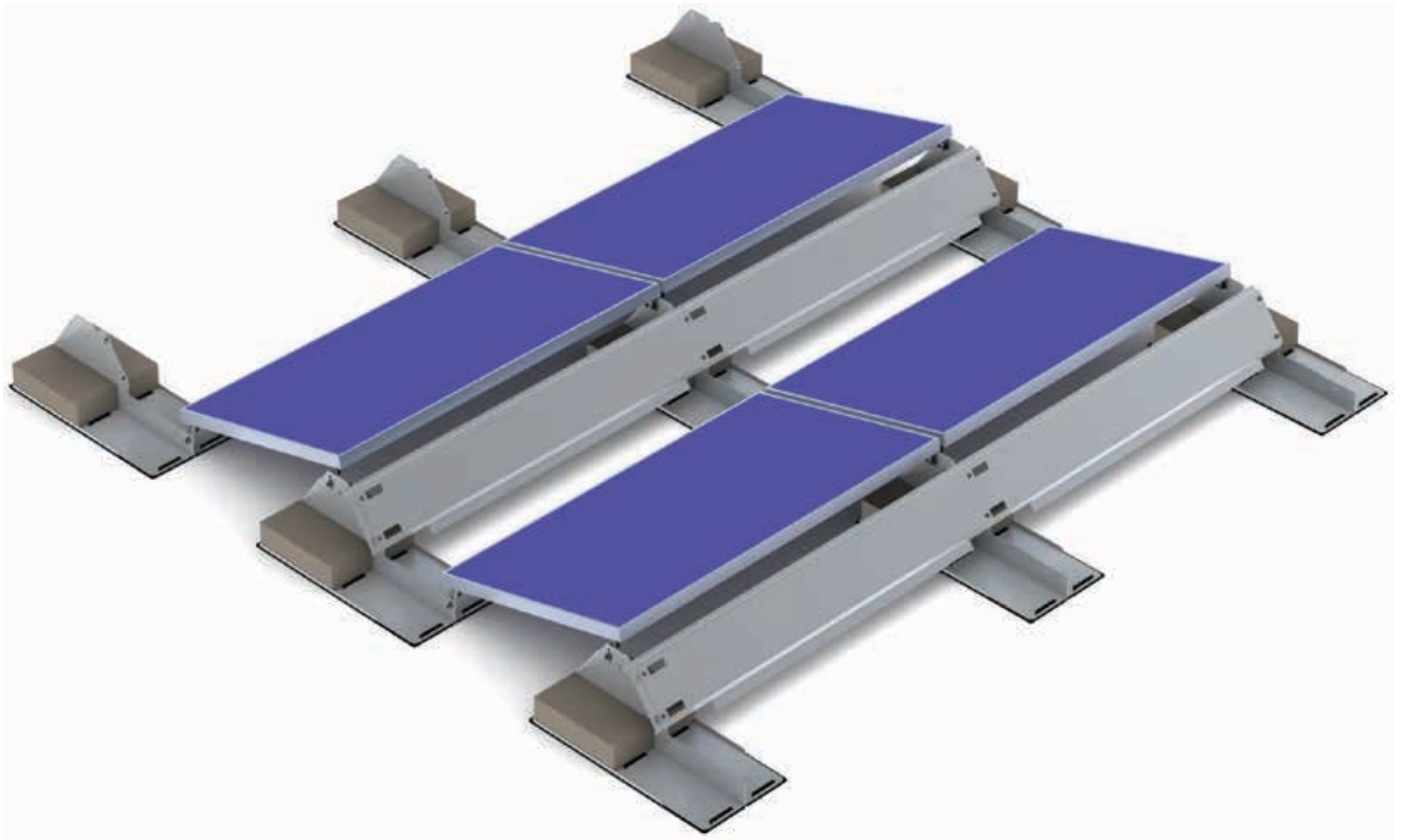
*Securing a Brighter Future*

LOWEST LIFE-CYCLE COST

CUTTING-EDGE ENGINEERING

WORLD-CLASS SERVICE

ENVIRONMENTAL RESPONSIBILITY



**POLAR BEAR<sup>®</sup> FR *Gen II***  
***10 Degree***

**PanelClaw** delivers mounting and balance-of-system solutions to accelerate the adoption of photovoltaics worldwide.

## Polar Bear *Gen II* 10 Degree Flat Roof Mounting System

Polar Bear FR *Gen II* - 10 Degree is an eco-friendly, flexible ballast mounting solution for commercial flat roofs. Its innovative 3-component design and factory-integrated features enable integrators to overcome installation challenges and deliver lower life-cycle costs.

### 3 Polar Bear Components

#### Support

- Universal, module-independent design
- Increased inter-row spacing flexibility for optimal array design
- Additional mounting holes for wavy roof friendliness
- Integrated recycled rubber roof protection pad for rapid installation
- Multi-purpose tab for enhanced wire management or integrated electrical ground lug (when necessary)
- Integrated PEM® studs for easy Wind Deflector installation
- Stainless steel fastener kit with just two nut and bolt sizes
- Mechanical attachment option
- Available in aluminum or G90 steel

#### Wind Deflector

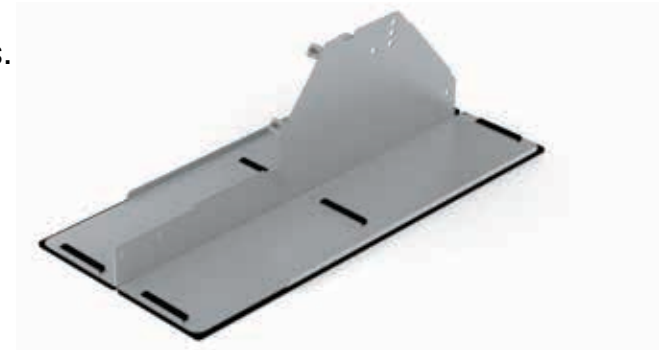
- A-thermalized design for enhanced roof protection
- Chamfered edges and lightweight construction facilitate easy handling and safe installation
- Common Deflector for Polar Bear and Grizzly Bear 10 Degree products
- Available in aluminum or G90 steel

#### Claw

- Universal to all PanelClaw mounting systems
- UL 2703 certified for electric bonding and grounding
- Factory-installed module-mounting stainless steel screw
- Serrated design to increase clamping power



UL 2703 Recognized E339731  
Electric Bonding and Grounding



#### Application

Flat Roof  
(max slope 5 degrees)

#### Installation Speed

160-180 modules per day  
(3-person crew)

#### Module Tilt Angle

10-12 degrees  
(dependent on module width)

#### Module Orientation

Landscape

#### Basic Wind Speed

Up to 120 mph (193 km/h)

#### Wind Exposure Category

B and C (D upon request)

#### Array Platform Load

~3-7 psf (~15-34 kg/m<sup>2</sup>)  
(racking, ballast, and modules)

#### Building Height

Up to 60 feet (18.3 meters)  
(custom upon request)

#### Standard Warranty

10 years

#### FOR PRODUCT AND SALES INFORMATION, CONTACT:

800.263.5002

solar@wurth.ca

[www.wurthcanada.com](http://www.wurthcanada.com)

